

25 RADMOOR ROAD : LOUGHBOROUGH LE11 3BP



6 large double bedrooms

£96 per week rent only 2019-2020

Add £9 per week all inclusive

Total all inclusive £105 per week / £5,460 for the year

A very large house of exceptionally high standard; off road parking for three cars. 6 large bedrooms, all en-suite showers with wash basins and vanity units, new kitchen and large lounge / dining room.

Faultless location in the most-desirable area of the Golden Triangle this is a great opportunity to live in a truly amazing house.

The enclosed garden is perfect for BBQs; there are trees & shrubs plus a lockable bike storage shed.

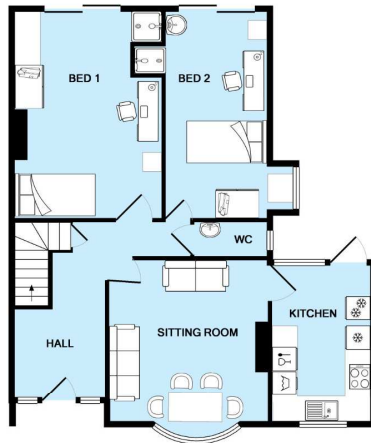


www.andrewchell.com

66 Ashby Road : Loughborough : LE11 3AE

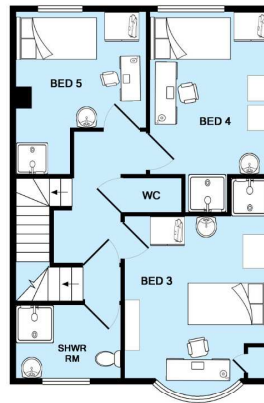
m: 07769 684800 t: 01509 552814 e: andrew@andrewchell.com

25 RADMOOR ROAD : LOUGHBOROUGH LE11 3BP

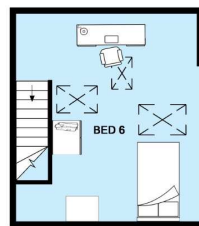


GROUND FLOOR

Made with Metropix ©2015



1ST FLOOR



2ND FLOOR

All-inclusive package

A budgeted allowance scheme is included in the rent to cover the cost of Water Rates and TV Licence along with all the bills for electricity, gas, broadband internet, digital TV and phone services you use during your tenancy.

Any unused allowance of the electricity and gas budget is refunded.

www.andrewchell.com

66 Ashby Road : Loughborough : LE11 3AE

m: 07769 684800 t: 01509 552814 e: andrew@andrewchell.com